

VHK Series 导电高分子混合型片式铝电解电容器 125°C 4000-6000 小时产品

Hybrid conductive polymer. 125°C 4000-6000 hours . For SMD Type

- 混合型电解质, 高耐压, 长寿命, 极低阻抗, 125°C 4000-6000 小时
- 性能稳定, 可靠性高, 符合 RoHS • 无卤对应品 • 符合 AEC-Q200
- Hybrid conductive polymer, high voltage, long life, low impedance, 125°C 4000-6000 hours.
- High stability and reliability. RoHS Compliant
- Halogen-free, corresponding product
- AEC-Q200 Compliant

NEW

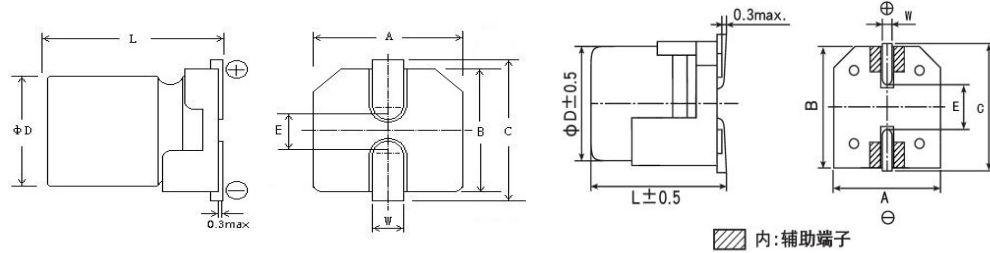


主要技术性能 Specifications

使用温度范围 Operating Temperature Range	-55~+125°C									
额定电压范围 Rated Voltage Range	6.3~100V DC									
标称容量允许偏差 Capacitance Tolerance	±20% (120Hz, 20°C)									
漏电流(20°C) Leakage Current	Rated voltage	6.3~100V								
	Time	2 分钟 (after 2 minutes)								
	Case Size	Φ5~Φ12.5								
	Leakage Current	I≤0.01 CV (μA)或 3μA 取较大者 I≤0.01 CV or 3μA whichever is greater								
损耗角正切值 Dissipation Factor (120Hz 20°C)	WV (V)	6.3	10	16	25	35	50	63	100	
	tgδ	0.20	0.18	0.16	0.14	0.12	0.10	0.08	0.08	
温度特性 (120Hz) Temperature Characteristics Impedance Ratio(100kHz)	WV(V)	6.3	10	16	25	35	50	63	100	
	Z _{-25°C} / Z _{+20°C}	1.5	1.5	1.5	1.5	1.5	1.5	1.5	1.5	
	Z _{-55°C} / Z _{+20°C}	2	2	2	2	2	2	2	2	
耐久性 Load Life	+125°C施加额定电压 4000-6000 小时,恢复 16 小时后,电容器应满足要求 After applying rated voltage for 4000-6000 hours at +125°C and then resumed 16 hours. The capacitor shall meet the following limits.									
						Φ5×6.0	4000H			
						6.3V~16V	4000H			
						63V~100V	4000H			
					25V~50V Φ5×6.0 除外 (25V~50V except Φ5×6.0)	6000H				
容量变化率 Capacitance Change		≤±30%初始测量值 ≤±30% of Initial measured value								
漏电流值 Leakage Current		≤规定值 ≤The specified value								
损耗角正切值 Dissipation Factor		≤2 倍规定值 ≤200% of the specified value								
等效串联电阻(ESR) Equivalent series resistance		≤2 倍规定值 ≤200% of the specified value								

VHK Series

■ 外形图及尺寸 Case size table



mm

ΦD	L	A±0.2	B±0.2	C±0.2	E±0.2	W
Φ5	6.0±0.3	5.3	5.3	5.9	1.3	0.5~0.8
Φ6.3	6.0±0.3	6.6	6.6	7.4	2.2	0.5~0.8
Φ6.3	7.7±0.3	6.6	6.6	7.4	2.2	0.5~0.8
Φ8	10.2±0.5	8.3	8.3	9.1	3.1	0.9~1.1
Φ10	10.2±0.5	10.3	10.3	11.1	4.5	0.9~1.1
Φ10	12.5±0.5	10.3	10.3	11.1	4.5	0.9~1.1
Φ12.5	13.5±0.5	13	13	13.8	5.2	0.8~1.2

■ 标称电容量、额定电压、额定纹波电流与外形尺寸对应表

Nominal capacitance, rated voltage, rated ripple current and case size table

WV μF	6.3V			10V			16V			25V		
	ΦD×L mm	I (mA)	ESR (mΩ)	ΦD×L mm	I (mA)	ESR (mΩ)	ΦD×L mm	I (mA)	ESR (mΩ)	ΦD×L mm	I (mA)	ESR (mΩ)
33										5x6.0	900	80
47							5x6.0	900	70	6.3x6.0	1300	50
56										6.3x6.0	1300	50
68										6.3x7.7	2000	30
82							6.3x6.0	1600	45			
100				6.3x6.0	1600	45				6.3x7.7	2000	30
150							6.3x7.7	2200	27	8x10.2	2300	27
220	6.3x6.0	1600	45	6.3x7.7	2300	24				8x10.2	2300	27
270							8x10.2	2500	22	10x10.2	2500	20
330	6.3x7.7	2300	24	8x10.2	2500	22				10x10.2	2500	20
470							10x10.2	2600	18			
560	8x10.2	2500	22							10x12.5	3500	18
820	10x10.2	2600	18	10x10.2	2600	18				12.5x13.5	4000	15

VHK Series

■ 标称电容量、额定电压、额定纹波电流与外形尺寸对应表

Nominal capacitance, rated voltage, rated ripple current and case size table

WV μF	35V			50V			63V			100V		
	ΦD×L mm	I (mA)	ESR (mΩ)	ΦD×L mm	I (mA)	ESR (mΩ)	ΦD×L mm	I (mA)	ESR (mΩ)	ΦD×L mm	I (mA)	ESR (mΩ)
10				5x6.0	750	120	6.3x6.0	1000	120			
15										10x10.2	1700	36
22	5x6.0	900	100	6.3x6.0	1100	80	6.3x7.7	1500	80			
27				6.3x6.0	1100	80						
33				6.3x7.7	1600	40	8x10.2	1600	40			
47	6.3x6.0	1300	60	8x10.2	1800	30	8x10.2	1600	40			
56				8x10.2	1800	30	10x10.2	1800	30			
68	6.3x7.7	2000	35	8x10.2	1800	30	10x10.2	1600	40			
82				10x10.2	2000	25	10x10.2	1800	30			
100	6.3x7.7	2000	35	10x10.2	1800	30	10x12.5	2600	20			
120							12.5x13.5	3600	20			
150	8x10.2	2300	27	10x12.5	3000	24						
220	8x10.2	2300	27	10x10.2 10x12.5	1800 3000	30 24						
270	10x10.2	2500	20									
330				12.5x13.5	3600	20						
390	10x12.5	3000	18									
560	12.5x13.5	4000	15									

I~额定纹波电流 Rated ripple current: (mA, 125°C, 100kHz), ESR: (mΩ, 20°C, 100KHZ)